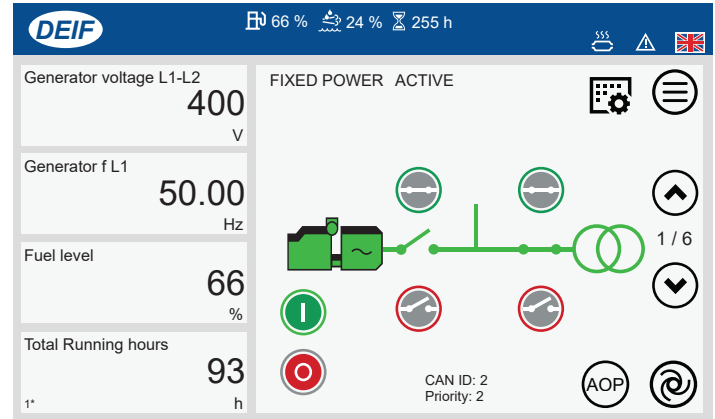




## Common features

### Easy setup

Simply connect an Ethernet cable to the AGC-4 controller.



## General description

TDU 107 is a preprogrammed touch screen solution for connection to DEIF's AGC-4 controllers via an Ethernet port. \*

The displays provide user-friendly touch screen control, visualisation and graphical overviews with a quality display that is easily readable even at sharp angles.

Combines both a HMI display and 6 AOP (Additional Operator Panel) on one device. Easy to use icon driven HMI providing fast access and configurable instrument pages.

Provides Tier 4 final support.

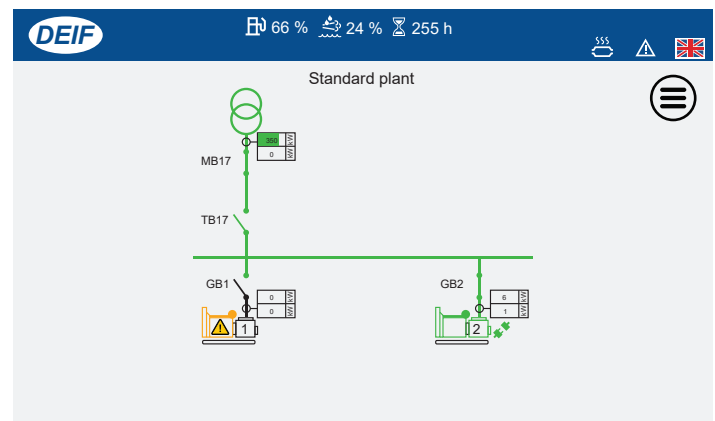
The TDU 107 is available in two versions:

- TDU 107 Core
- TDU 107 Extended

\* AGC-4 requires the Ethernet option N for connection.

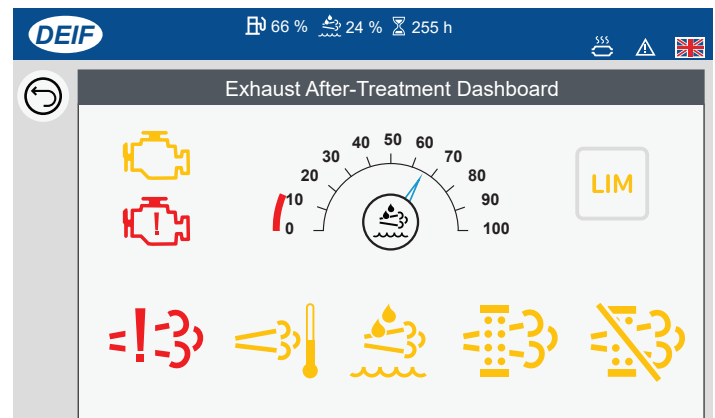
### Supervision

Instant overview of all connected controllers in your application, including live status and alarms.



### Tier 4 final support

Full support for Tier 4 icons including an Exhaust After-treatment dashboard.



Feature comparison	Core	Extended
Tier 4 final support	•	•
Resistive touch screen	•	
Capacitive touch screen		•
VNC support (Remote access)		•
Temperature range 0 °C to + 50 °C	•	
Temperature range -20 °C to + 60 °C		•
2 ports Ethernet switch		•

## Technical specifications

### TDU 107 Core



- Type: TFT
- Resolution: 800 x 480 pixel (WVGA)
- Active display area: 7" diagonal
- Aspect ratio H/V: 16:9
- Viewing angle (H/V): 140/120
- Colours: 16 bit (64K)
- Brightness: 200 Cd/m<sup>2</sup> typ.
- Backlight: LED
- Screen saver: Yes

### TDU 107 Extended



- Type: TFT
- Resolution: 800 x 480 pixel
- Active display area: 7" diagonal
- Aspect ratio H/V: 16:9
- Viewing angle (H/V): 170/170
- Colours: 24 bit (16 million)
- Brightness: 500 Cd/m<sup>2</sup> typ.
- Backlight: LED
- Screen saver: Yes

### Interfaces

- Touch screen: Resistive
- Ethernet: 1 x 10/100 Mbit
- USB: 1 x USB 2.0 (hosts) - max. 500 mA

### Interfaces

- Touch screen: Projected capacitive, multi-touch
- Ethernet: 2 x 10/100 Mbit, 1 x 10/100/1000 Mbit
- USB: 2 x USB 2.0 (hosts) - max. 500 mA
- VNC server - Remote access

### Power supply

- Power supply voltage: 24 V DC (10 to 32 V DC)
- Current consumption: 0.3 A at 24 V DC (max.)
- Fuse: No
- Weight: Approx. 0.6 kg (un-boxed)
- Battery: Supercapacitor

### Power supply

- Power supply voltage: 24 V DC (10 to 32 V DC)
- Current consumption: 0.7 A at 24 V DC (max.)
- Fuse: Automatic, self-resettable
- Weight: Approx. 1.3 kg (un-boxed)
- Battery: Rechargeable Lithium battery

### Environment

- Operating temperature: 0 °C to +50 °C (vertical install)
- Storage temperature: -20 °C to +70 °C
- Operating/storage humidity: 5-85% RH, non condensing
- Vibration: 2 to 13.2 Hz ±1 mm, 13.2 to 100 Hz 0.7 g
- Shock: 50 g 11 ms
- Protection class: IP 66 Type 2 and 4X (front), IP20 (rear)

### Environment

- Operating temperature: -20 °C to +60 °C (vertical install)
- Storage temperature: -30 °C to +70 °C
- Operating/storage humidity: 95% RH Condensation
- Vibration: 2 to 13.2 Hz ±1 mm, 13.2 to 100 Hz 0.7 g
- Shock: 50 g 11 ms
- Protection class: IP 66 (front), IP20 (rear)

### Approvals

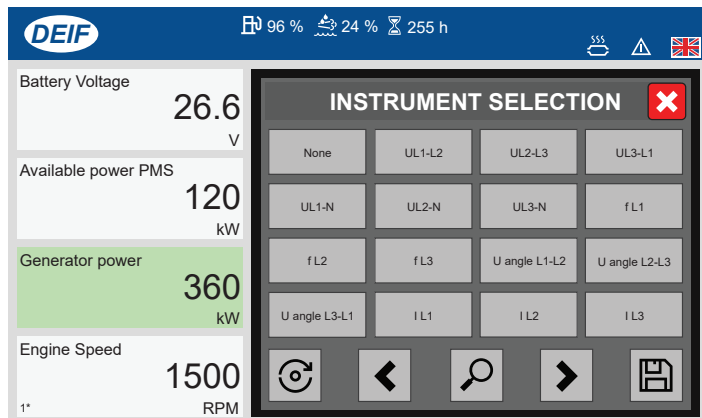
- CE
- UL
- cULus Listed to UL508 Industrial control equipment
- cULus Class I, Division 2

### Approvals

- CE
- UL UL508 Listed (Pending), Haz. Loc. Class I, Division 2, Groups A, B, C and D (Pending)
- cULus Listed to UL508 Industrial control equipment
- Lloyds Register - LR Type Approval Certificate
- DNV GL

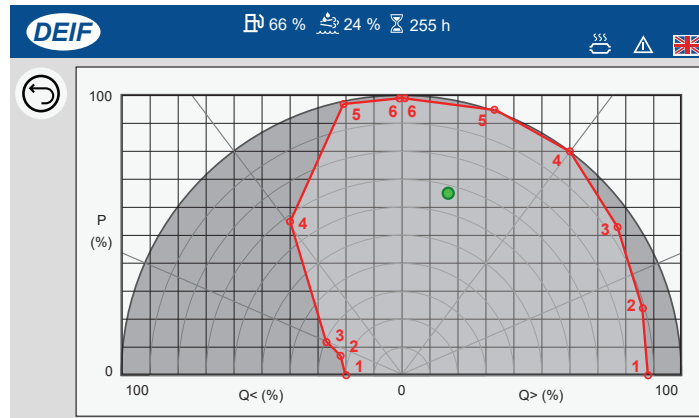
## Fast instrument selection

Easily configure your live data information by selecting the required instrument readout, directly on the screen.



## Alternator curve

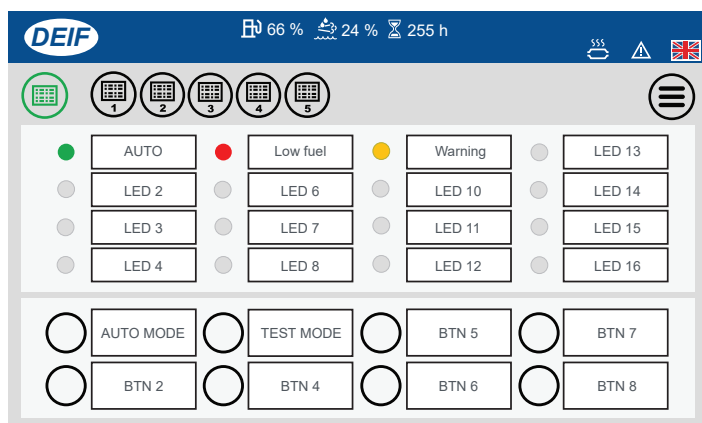
Visual display for the safe operation limits for the alternator. \* GENSET actual working point is represented by the green dot.



\* AGC-4 requires option C2 to see operation limits.

## Additional operator panels (AOP)

Configure up to 6 additional operator panels, providing customisable buttons and LEDs for controller functions.



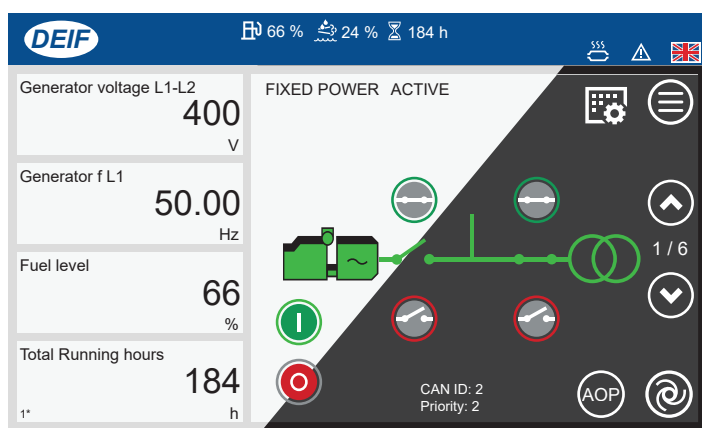
## Alarm or event logs

Easily filter only alarm or log events, or merge them back into one single list. Filter events for a given date start and end.

Description	Timestamp
GB OFF	14/05/2019 - 09:27:26
Clear parameter edit	14/05/2019 - 08:54:28
3490 Emergency STOP	14/05/2019 - 08:54:22
2320 Busbar blocked	14/05/2019 - 08:53:12
2180 GB Pos fail	10/05/2019 - 12:08:59
Primary controller	10/05/2019 - 12:08:53
Power management	10/05/2019 - 12:08:35

## Light or dark themes

Switch the display between light or dark themes.



## Quick Input / output overview

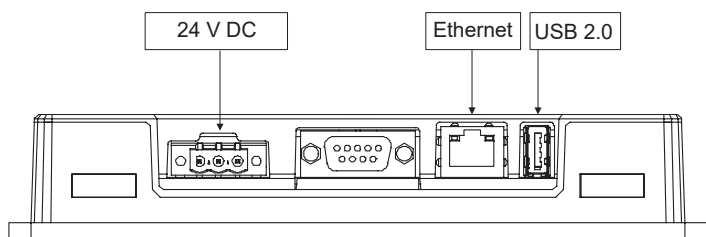
Quick overview for the status of all inputs and outputs.

Digital Inputs	Outputs
Digital input 43	Reactive (Q) line ON
Digital input 44	Relay 5
Auto start/stop	MB OFF relay
Digital input 46	MB ON relay
Digital input 47	GB OFF relay
External P	GB ON relay
Digital input 49	Relay 20
Digital input 50	Relay 21
Digital input 51	Run coil relay

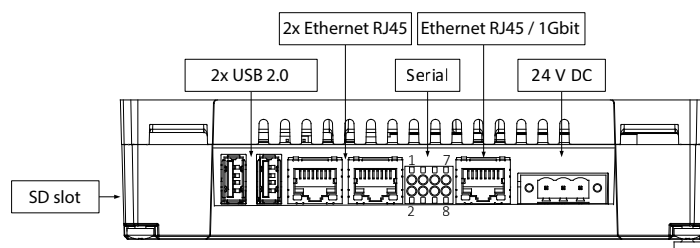
# Touch Display Unit TDU Drawings

## Connections

TDU 107 Core

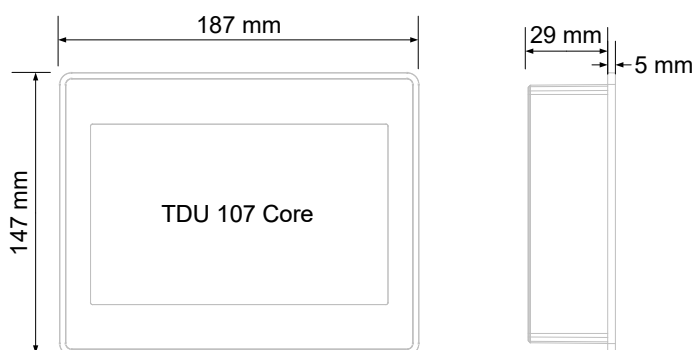


TDU 107 Extended

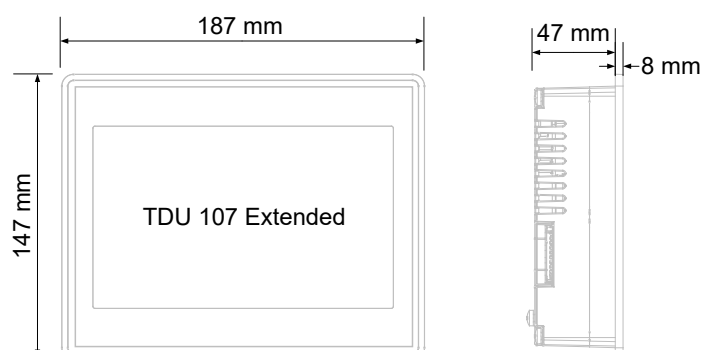


## Dimensions

TDU 107 Core



TDU 107 Extended



### For more information, please contact:

DEIF A/S · Frisenborgvej 33 · DK-7800 Skive · Denmark  
Tel.: +45 9614 9614 · Fax: +45 9614 9615 · info@deif.com · www.deif.com