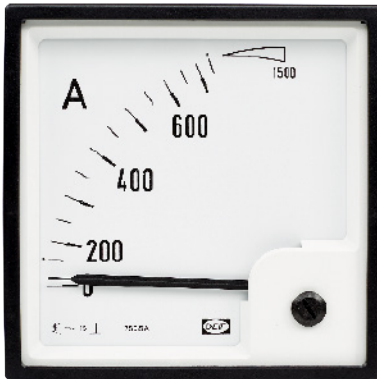


# Quadratic Moving Iron Instrument, EQ

Measure AC current & voltage in true RMS

---



The EQ is a versatile quadratic moving iron instrument for measuring AC currents and AC voltages within the range 16 to 65 Hz.

Measuring true RMS, the EQ instruments have been designed, produced and tested according to the present standards.

They are available in four different sizes – 48, 72, 96 and 144 mm – but can also be adapted to suit customisation requests.

## EQ features

- ▶ Accuracy class: 1.5
- ▶ 90° pointer deflection
- ▶ IP52 (IP54 on request)
- ▶ Customised and exchangeable scale available for 90°
- ▶ Measuring range: 40 to 800 V (Q48: 40 to 300 V), 1 to 60 A (Q48: 1 to 40 A)

## EQ type approval



[www.deif.com](http://www.deif.com)