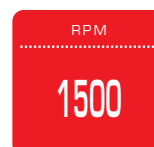
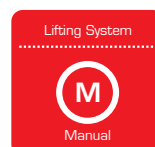
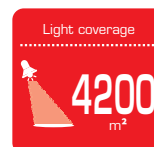
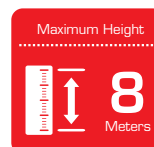


Model: LHM-V8

Powered by Kohler



Lighting Features

Lighting Type	Metal Halide
Frequency	50HZ
Voltage	230V
Number of Lamps	4
Nominal Lamps Power (Total)	4000W
Lighting Capacity	360000Lumen
Lit up area	4200m2

Alternator Specifications

Alternator	AGG
model	KI164B
Type	Brushless
Class	50HZ
Frequency	230V
Voltage	H
Phases	1
Continuous power 125°/40°	8kVA

Telescopic mast

Maximun height	8m
Type of erection	Manual
Type of Pivoting system	Manual
Max Angle of pivoting	340deg
Adjustable stabilizer	4n°
Maximum wind stability	80Km/h

Dimensional data

Lenght	2650mm
Width	1300mm
Height	2460mm
Length - operating condition	2650mm
Width - operating condition	2460mm
Height - operating condition (mast and outriggers extended)	7800mm
Dry weight	716KG

Engine specifications

Engine manufacturer	Kohler
Model	KDW1003
Operating Speed-Nominal	1500rpm
Engine cooling system	Water
Nr. of cylinder and disposition	3 in line
Oil capacity	3.5L
Fuel	Diesel
Starting system	Electric

Autonomy

Fuel tank capacity	75L
Running time	47H

Noise level

Noise pressure level @ 7 m	68dB(A)
----------------------------	---------

Mobility

Type of Mobility	Site Trailer
Nombre d'essieu	1 nr
Connection drawbar	Din eye 45mm

Control Panel

Mounted and integrated in the canopy, for monitoring, control and protection of the Light Tower.

CONTROL SECTION

- Starting key
- Preheater signal lamp
- Emergency stop button (external)
- Hour meter
- Fuel gauge – Monitor fuel level
- Low fuel level signal lamp
- Low oil pressure signal lamp
- Battery charge signal lamp

POWER SECTION

- 40 A automatic earth leakage relay
- 16 A circuit breaker for lamps switch

SOCKET TYPE

2P+T CEE 230V 16A IP44

