



4.2 kVA 220V Capacitor  
6 kVA 220V Capacitor

6 kVA 220V A.V.R  
6 kVA 400V A.V.R

6 kVA 220V Welder  
Generator

L70N-DGLT / DEGLT  
L100N DGLT / DEGLT

## VERT ENERGY

### POWER PRODUCTS: TECHNICAL DATA SHEETS

YANMAR GENERATORS



## ABOUT THE COMPANY


**Southern Africa's leading supplier of Electro-Mechanical Power Generation & Transmission Products**

Situated in Southern Africa's economic and industrial hub, Johannesburg, Vert Energy is well placed to service and support the region with the following range of products:

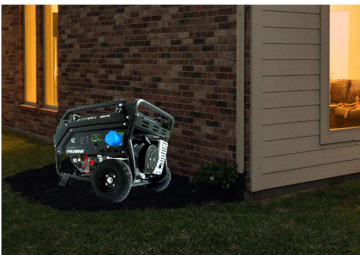
- Electric Motors and Drives
- Power Generation Products
- Portable Power Products
- Service and Support.

Make the decision and experience pure energy today.

## WATER PUMPS



## GENERATORS



AGRICULTURE | MINING | CONSTRUCTION | RENTAL

## TRASH PUMPS



## LIGHTING TOWERS



INDEX	PAGE
<b>Yanmar Generator Range</b>	4
4,2 kVA 220V Capacitor & Images	5 - 6
6 kVA 220V Capacitor & Images	7 - 8
6 kVA 220V AVR & Images	9 - 10
6 kVA 400V A.V.R & Images	11 - 12
6 kVA 220V Welder Generator & Images	13 - 14
<b>Yanmar Engine Specifications</b>	
L70N-DGLT, L70N-DEGLT Specification Data & Drawings	15 - 16
L100N-DGLT, L100N-DEGLT Specification Data & Drawings	17 - 18
<b>NSM ALTERNATORS</b>	
NSM K100E Specification Data & Drawings	19 - 20
NSM K100G Specification Data & Drawings	21 - 22
NSM KR100G Specification Data & Drawings	23 - 24
NSM ZR100SC Specification Data & Drawings	25 - 26
NSM WS100AC Specification Data & Drawings	27 - 28
<b>Spare Parts</b>	29
<b>Contact Us</b>	30

Specifications subject to change without prior notice.  
E. & E.O.

## YANMAR POWERED DIESEL GENERATORS

Model: VPPYG D 4200E/M 220V SF



### DIESEL POWERED GENERATOR: OVERVIEW

4.2 kVA 220V with Capacitor

Low Fuel Consumption, High Durability

### Technical Features

Frequency:	50 Hz
Rated AC Output:	3.5 kVA / 3000 RPM
Maximum AC Output:	4 kVA / 3600 RPM 60 Hz
Power Factor:	1
AC Output Voltage:	220 V
Alternator:	NSM K100E (Capacitor)
Engine:	L70N-DGLT / DEGLT
Engine Type:	Vertical cylinder, 4-cycle air-cooled diesel engine
Displacement:	320 cc
Maximum Output:	4.9 kW / 3600 RPM
Fuel Type:	Diesel
Fuel Tank Capacity:	13.5 ltr
Continuous Work:	13.5 hrs
Oil Tank Capacity:	1.1 ltr
Starting Systems:	Recoil / Electrical Start
Generator Frame:	Steel Frame

### Packaging, Weights and Dimensions

Dimensions:	(L X W X H)	720 x 530 x 600 mm
Dry Weights Recoil Start:	(kg)	75.3
Dry Weight Electric Start:	(kg)	79 (Weights Excluding Battery)

## YANMAR POWERED DIESEL GENERATORS

Model: VPPYG D 4200E 220V SF



Side View



Back View



Side View



Operational View Electrical Panel

## YANMAR POWERED DIESEL GENERATORS

Model: VPPYG D 6000E 220V SFW



### DIESEL POWERED GENERATOR: OVERVIEW

6 kVA 220V with Capacitor

Low Fuel Consumption, High Durability

### Technical Features

Frequency:	50 Hz
Rated AC Output:	5.5 kVA / 3000 RPM
Maximum AC Output:	6 kVA / 3600 RPM 60 Hz
Power Factor:	1
AC Output Voltage:	220 V
Alternator:	NSM K100G (Capacitor)
Engine:	L100N-DEGLT
Engine Type:	Vertical cylinder, 4-cycle air-cooled diesel engine
Displacement:	435 cc
Maximum Output:	7.4 kW / 3600 RPM
Fuel Type:	Diesel
Fuel Tank Capacity:	13.5 ltr
Continuous Work:	9.5 hrs
Oil Tank Capacity:	1.1 ltr
Starting Systems:	Electric Start
Generator Frame:	Steel Frame with Wheels

### Packaging, Weights and Dimensions

Dimensions: (L X W X H)	806 x 533 x 732 mm
Handle Length (not included in above measurements):	245 mm
Dry Weights: (kg)	111.9 (weight excluding battery)

## YANMAR POWERED DIESEL GENERATORS

Model: VPPYG D 6000E 220V SFW



Side View



Back View



Side View



Operational View Electrical Panel



## YANMAR POWERED DIESEL GENERATORS

Model: VPPYG D 6000E 220V AVR SFW



### DIESEL POWERED GENERATOR: OVERVIEW

6 kVA 220V with A.V.R

Low Fuel Consumption, High Durability

### Technical Features

Frequency:	50 Hz
Rated AC Output:	5.5 kVA / 3000 RPM
Maximum AC Output:	6 kVA / 3600 RPM 60 Hz
Power Factor:	1
AC Output Voltage:	220 V
Alternator:	NSM KR100G (A.V.R)
Engine:	L100N-DEGLT
Engine Type:	Vertical cylinder, 4-cycle air-cooled diesel engine
Displacement:	435 cc
Maximum Output:	7.4 kW / 3600 RPM
Fuel Type:	Diesel
Fuel Tank Capacity:	13.5 ltr
Continuous Work:	9.5 hrs
Oil Tank Capacity:	1.1 ltr
Starting Systems:	Electric Start
Generator Frame:	Steel Frame with Wheels

### Packaging, Weights and Dimensions

Dimensions:	(L X W X H)	810 x 533 x 732 mm
Handle Length (not included in above measurements):		245 mm
Dry Weights:	(kg)	112.2 (weight excluding battery)

## YANMAR POWERED DIESEL GENERATORS

Model: VPPYG D 6000E 220V AVR SFW



Side View



Back View



Side View



Operational View Electrical Panel

## YANMAR POWERED DIESEL GENERATORS

Model: VPPYG D 6000E 400V AVR SFW



### DIESEL POWERED GENERATOR: OVERVIEW

6 kVA 400V with A.V.R

Low Fuel Consumption, High Durability

### Technical Features

Frequency:	50 Hz
Rated AC Output:	6.6 kVA / 3000 RPM
Maximum AC Output:	7.4 kVA / 3600 RPM 60Hz
Power Factor:	0.8
AC Output Voltage:	220 V
Alternator:	NSM ZR100SC (A.V.R)
Engine:	L100N-DEGLT
Engine Type:	Vertical cylinder, 4-cycle air-cooled diesel engine
Displacement:	435 cc
Maximum Output:	7.4 kW / 3600 RPM
Fuel Type:	Diesel
Fuel Tank Capacity:	13.5 ltr
*Continuous Work:	9.5 hrs
*Oil Tank Capacity:	1.1 ltr
Starting Systems:	Electric Start
Generator Frame:	Steel Frame with Wheels

### Packaging, Weights and Dimensions

Dimensions:	(L X W X H)	810 x 533 x 732 mm
Handle Length (not included in above measurements):		245 mm
Dry Weights:	(kg)	112.2 (weight excluding battery)

## YANMAR POWERED DIESEL GENERATORS

Model: VPPYG D 6000E 400V AVR SFW



Side View



Back View



Side View



Operational View Electrical Panel

## YANMAR POWERED DIESEL WELDER GENERATORS

Model: VPPYGW D 6000E 220V 200A SFW



### GASOLINE POWERED WELDER GENERATOR: OVERVIEW

6 kVA 220 V 200A Welder Generator

Low Fuel Consumption, High Durability

### Technical Features

Maximum Rated Current:	200 A @ 35% and 180A @ 60% Duty Cycle
Rated AC Output:	5.5 kVA / 3000 RPM
Power Factor:	1
Welding Voltage:	45 - 60 V
AC Voltage:	220 V
Alternator:	NSM WS200AC
Engine:	L100N-DEGLT
Engine Type:	Vertical cylinder, 4-cycle air-cooled diesel engine
Displacement:	435 cc
Maximum Output:	6 kVA / 3600 RPM
Fuel Type:	Diesel
Fuel Tank Capacity:	13.5 ltr
Continuous Work:	9.5 hrs
Oil Capacity:	1.2 ltr
Starting Systems:	Electric Start
Welder Frame:	Steel Frame with wheels

### Packaging, Weights and Dimensions

Dimensions:	(L X W X H)	810 x 532 x 786 mm
Handle Length (not included in above measurements):		245 mm
Dry Weights:	(kg)	130 (weight excluding battery)

## YANMAR POWERED DIESEL GENERATORS

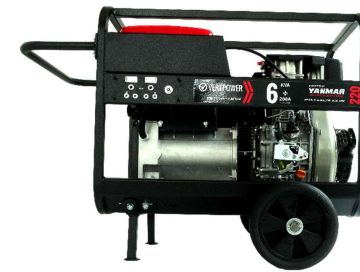
Model: VPPYGW D 6000E 220V 200A SFW



Side View



Back View



Side View



Operational View Electrical Panel

## YANMAR DIESEL ENGINES

Model: L70N-DGLT &amp; L70N-DEGLT



## Diesel ENGINES: OVERVIEW

L70N 4.9 kW

Small industrial diesel engine

## Technical Features

Type:	4-Stroke, Vertical Cylinder, Air-cooled Diesel Engine
Starting System:	Recoil / Electric Start
Cooling System:	Forced air-cooling by flywheel fan
No. of Cylinders:	1
Displacement:	320 cc
Bore x Stroke:	78 x 67 mm
Maximum Output:	4.4 kW / 3600 RPM
Continuous Output:	4.9 kW / 3600 PRM
Fuel Tank Capacity:	13.5 ltr Separately Mounted

## Mounting Configurations

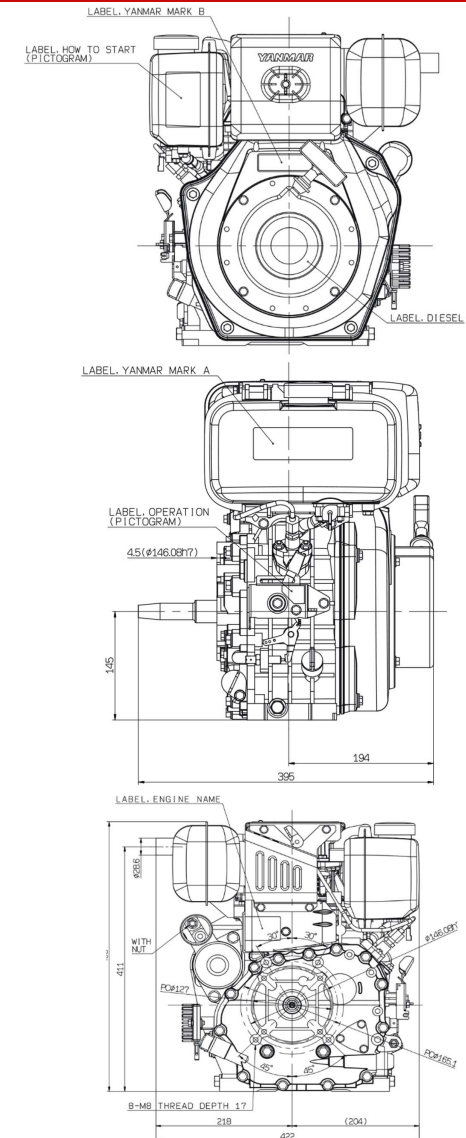
Standard	Tapered Shaft
----------	---------------

## Packaging, Weights and Dimensions

Dimensions:	(L X W X H)	378 x 422 x 453 mm
Dry Weights Recoil Start:	(kg)	36
Dry Weight Electric Start:	(kg)	41

**YANMAR DIESEL ENGINES**

Model: L70N-DGLT &amp; L70N-DEGLT





## YANMAR DIESEL ENGINES

Model: L100N-DGLT &amp; L100N-DEGLT



## GASOLINE ENGINES: OVERVIEW

L100N 7.4 kW

Small industrial diesel engine

## Technical Features

Type:	4-Stroke, Vertical Cylinder, Air-cooled Diesel Engine
Starting System:	Recoil / Electric Start
Cooling System:	Forced air-cooling by flywheel fan
No. of Cylinders:	1
Displacement:	435 cc
Bore x Stroke:	86 x 75 mm
Maximum Output:	7.4 kW / 3600 RPM
Continuous Output:	6.6 kW / 3600 PRM
Fuel Tank Capacity:	13.5 ltr Separately Mounted

## Mounting Configurations

Standard	Tapered Shaft
----------	---------------

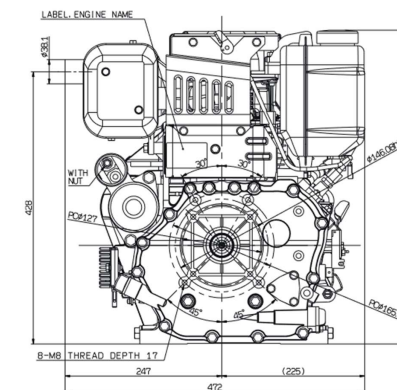
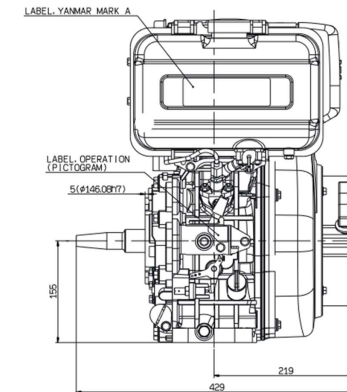
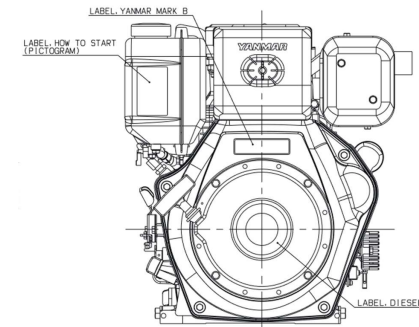
## Packaging, Weights and Dimensions

Dimensions:	(L X W X H)	412 x 473 x 494 mm
Dry Weights Recoil Start:	(kg)	48.5
Dry Weight Electric Start:	(kg)	53.5

**YANMAR DIESEL ENGINES**

Model: L100N-DGLG &amp; L100N-DEGLT

## DRAWINGS



## NSM 2 Pole 4.2kVA

Model: K100E

## SINGLE PHASE CAPACITOR



### SINGLE-PHASE ALTERNATORS 2 POLE: OVERVIEW

K100E 4.2kVA

Brushless, with capacitor

### Technical Features

Power Range (Elec) 50hz:	4.2 kVA (Prime Rated)
Power Range (Mech) 50hz:	5.8 kW Input Power @ 73% Efficiency (Prime Rated) pF 1.0
Standard Voltages 50hz:	230 V / 240 V
Voltages Accuracy:	-5%, -10% (cosφ = 1)
Insulation Class:	Class "H"
Protection:	IP23
T.H.D:	<6%
Good Starting Capacity:	(Icc >3In)

### Mounting Configurations

Standard	J609B Taper Shaft
----------	-------------------

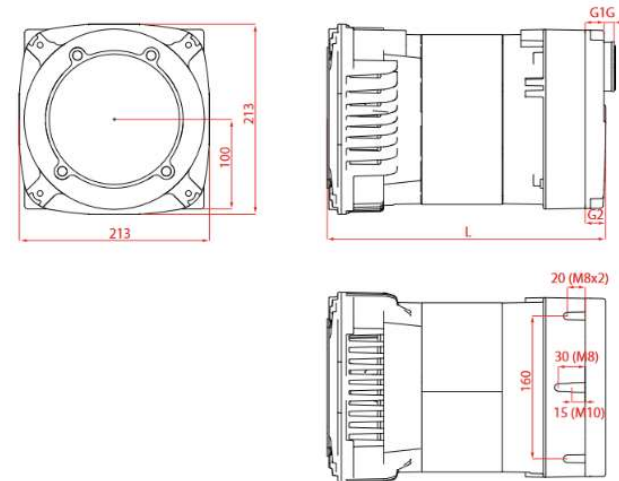
### Packaging, Weights and Dimensions

Dimensions:	(L X W X H)	314 x 213 x 213
Weight:	(kg)	20

## NSM 2 Pole 4.2kVA

Model: K100E

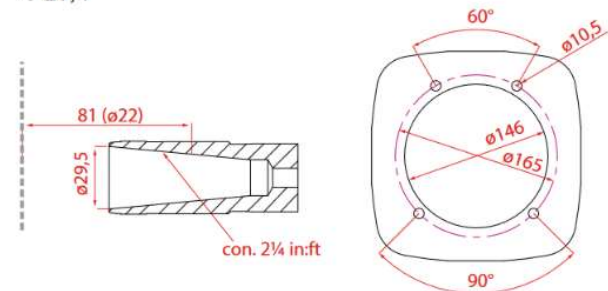
## DRAWINGS



### J609b

C 22

C 25,4



## NSM 2 Pole 6kVA

Model: K100G

## SINGLE PHASE CAPACITOR



### SINGLE-PHASE ALTERNATORS 2 POLE: OVERVIEW

K100G 6kVA

Brushless, with capacitor

#### Technical Features

Power Range (Elec) 50hz:	6 kVA (Prime Rated)
Power Range (Mech) 50hz:	7.3 kW Input Power @ 76% Efficiency (Prime Rated) pF1.0
Standard Voltages 50hz:	220 V / 240V
Voltages Accuracy:	± 2% (regardless of cosφ)
Insulation Class:	Class "H"
Protection:	IP23
T.H.D.:	<6%
Good Starting Capacity:	(Icc > 3In)

#### Mounting Configurations

Standard	J609B Taper Shaft
----------	-------------------

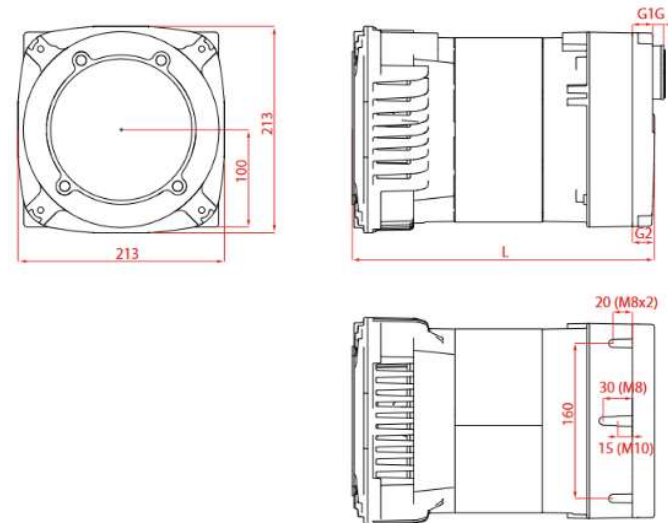
#### Packaging, Weights and Dimensions

Dimensions:	(L X W X H)	345 x 213 x 213
Weight:	(kg)	25

## NSM 2 Pole 6kVA

Model: K100G

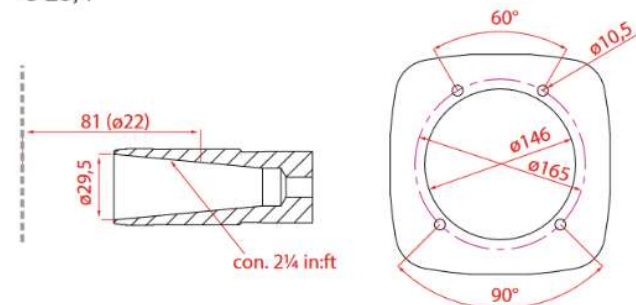
## DRAWINGS



### J609b

C 22

C 25,4



## NSM 2 Pole 6kVA

Model: KR100G

## SINGLE PHASE AVR



### SINGLE-PHASE ALTERNATORS 2 POLE: OVERVIEW

KR100G 6 kVA

Brush, with Automatic Voltage Regulator

### Technical Features

Power Range (Elec) 50hz:	6 kVA (Prime Rated)
Power Range (Mech) 50hz:	7.8 kW Input Power @ 77% Efficiency (Prime Rated) pF1.0
Standard Voltages 50hz:	230 V / 240 V
Voltages Accuracy:	-5%, -10% (cosφ = 1)
Insulation Class:	Class "H"
Protection:	IP23
T.H.D.:	<6%
Good Starting Capacity:	(Icc >3In)
Automatic Voltage Regulator:	AVR520

### Mounting Configurations

Standard	J609B Taper Shaft
----------	-------------------

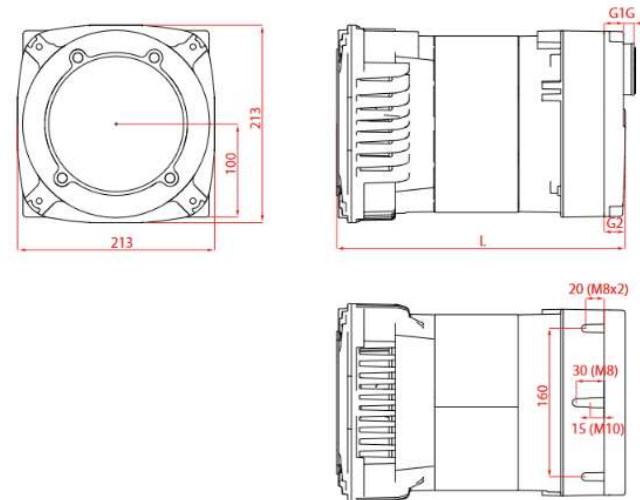
### Packaging, Weights and Dimensions

Dimensions: (L X W X H)	392 x 213 x 213
Weight: (kg)	25

## NSM 2 Pole 6kVA

Model: KR100G

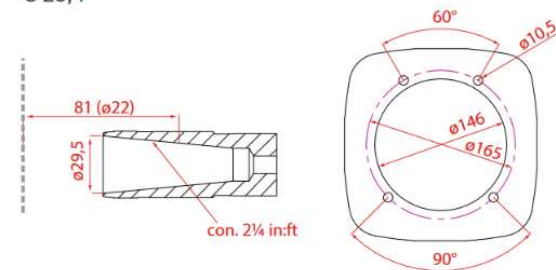
## DRAWINGS



### J609b

C 22

C 25,4



## NSM 2 Pole 7kVA

Model: ZR100SC

## THREE PHASE WITH AVR



### THREE-PHASE ALTERNATORS 2 POLE: OVERVIEW

ZR100SC 7kVA

Brushless, with Automatic Voltage Regulator

#### Technical Features

Power Range (Elec) 50hz:	7 kVA (Prime Rated)
Power Range (Mech) 50hz:	6.9 kW Input Power @ 81% Efficiency (Prime Rated) pF 0.8
Standard Voltages 50hz:	230 V / 400 V
Voltages Accuracy:	± 6% (cos φ = 0.9)
Insulation Class:	Class "H"
Protection:	IP23
T.H.D.:	<6%
Good Starting Capacity:	(Icc >4In)
Automatic Voltage Regulator:	AVR960D

#### Mounting Configurations

Standard	J609B Taper Shaft
----------	-------------------

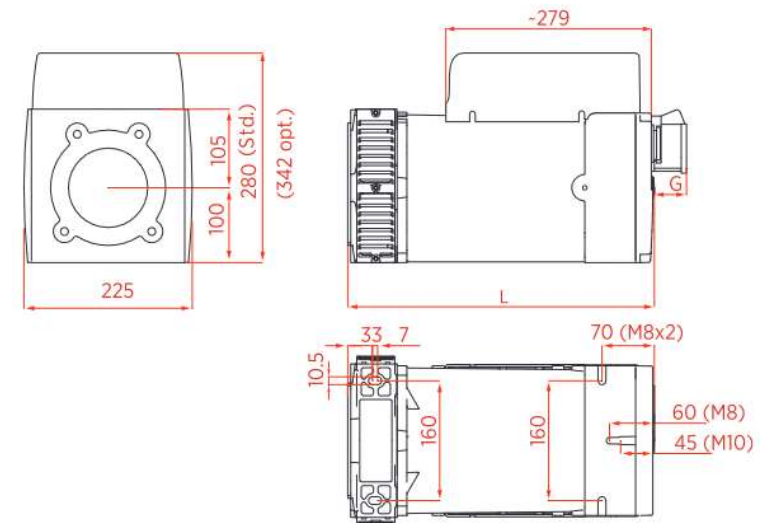
#### Packaging, Weights and Dimensions

Dimensions:	(L X W X H)	345 x 225 x 342
Weights	(kg)	27

## NSM 2 Pole 7kVA

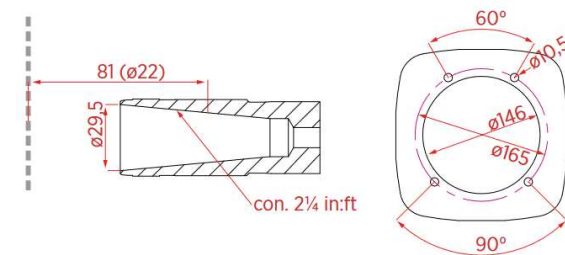
Model: ZR100SC

## DRAWINGS



### J609b

- C 22
- C 25,4
- C 35





## NSM 2 Pole 7kVA

Model: WS200AC

## WELDER GENERATOR



### SINGLE-PHASE ALTERNATORS 2 POLE: OVERVIEW

WS200AC 7kVA

Brushless Alternator

### Technical Features

Power Range (Elec) 50hz:	7 kVA (Prime Rated)
Welding Current > Driving Power:	180A (ø-4mm) > 7.5 kW (10HP) 200A (ø-4mm) > 9.0 kW
Duty:	180A - 35%, 200A - 35%
Strike Voltages:	45 - 60 V
Insulation Class:	Class "H"
Protection:	IP23
T.H.D.:	<6%

### Mounting Configurations

Standard	J609B Taper Shaft
----------	-------------------

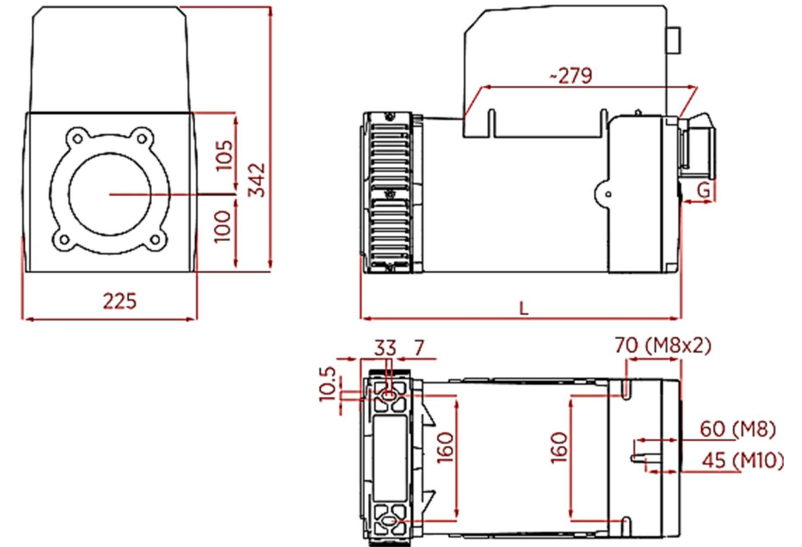
### Packaging, Weights and Dimensions

Dimensions:	(L X W X H)	410 x 225 x 342
Weight:	(kg)	44

## NSM 2 Pole 7kVA

Model: WS200AC

## DRAWINGS

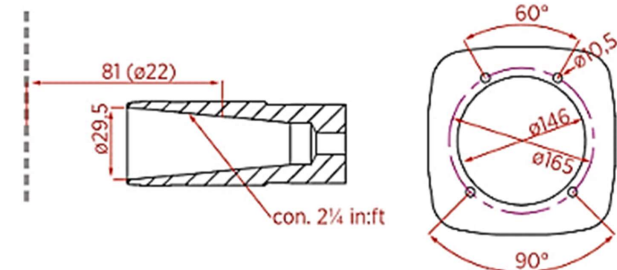


### J609b

C 22

C 25,4

C 35



## SPARE PARTS

Full range of Yanmar spare parts available



## VERT ENERGY AFRICA

Head Office  
11 Voyager Street  
Limbro Park, Sandton  
Johannesburg

Contact: [info@vertgroup.co.za](mailto:info@vertgroup.co.za)

Phone: -27 11 453 9669  
Fax: -27 11 453 4531

